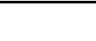

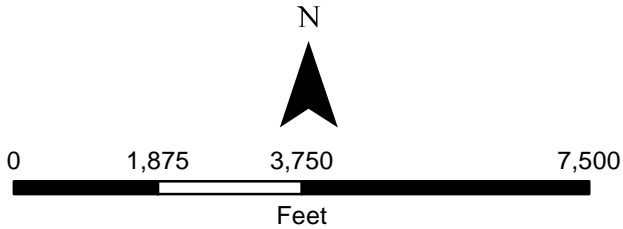


Legend

-  Buckley Air Force Base Boundary
-  TS119 Site Boundary



Buckley Air Force Base
Arapahoe County, CO

**Former Skeet Range Munitions
Response Site TS119 General
Location Map**







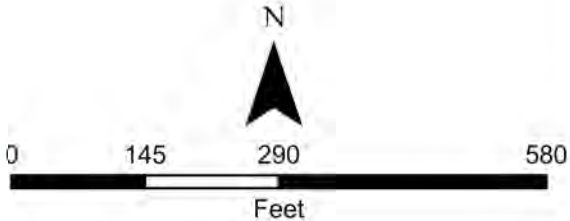
DATE
10/9/2019

FIGURE
1



Legend

-  Clay Target Fall Area
-  Muzzle Exhaust Area
-  Shot Fall Area
-  Theoretical Maximum Lead Shot Fall Area



TS119 Site
Arapahoe County, CO

**Former Skeet Range Munitions
Response Site TS119 Areas of
Concern Map**



DATE
3/12/2020

FIGURE
2

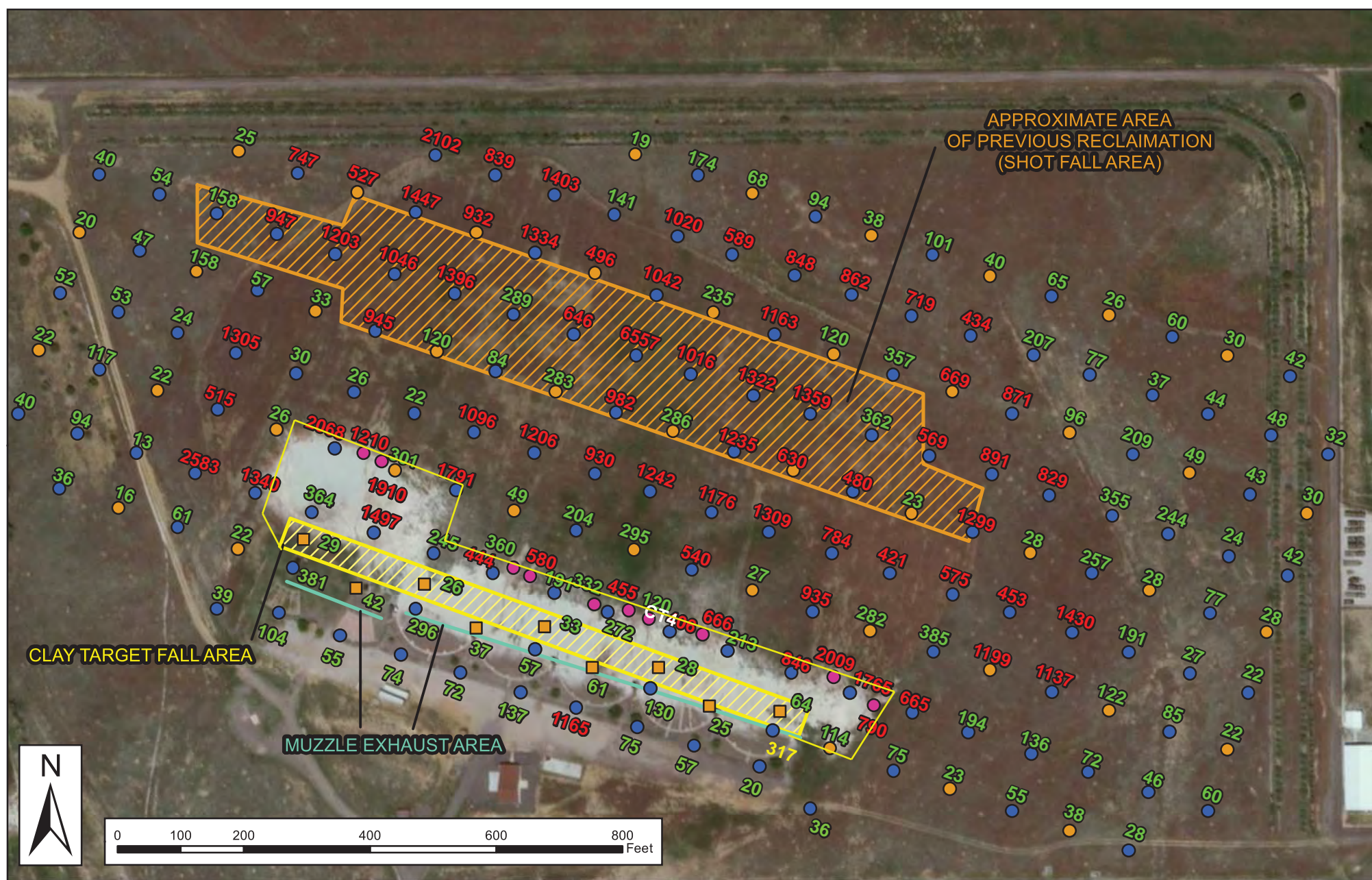


Figure 3
CSE Phase II
Surficial Soil Lead XRF Results
 Buckley Air Force Base, Colorado
 Contract No.: W9128F-17-C-0041
 Task Order: W9128F17R0070

Legend

- Erosion Area Sample
- Definitive Soil Sample Nodes - Lead
- Definitive Soil Sample Nodes - Lead & PAHs
- Screening Soil Sample Nodes

Lead Concentration (mg/kg)

- 0-400 At or below EPA RSL
- >400 Above EPA RSL

Notes:

1. Units in mg/kg = milligrams per kilogram
2. Lead concentrations per X-Ray Fluorescence (XRF) screening
3. EPA RSL = Regional Screening Levels for residential soil

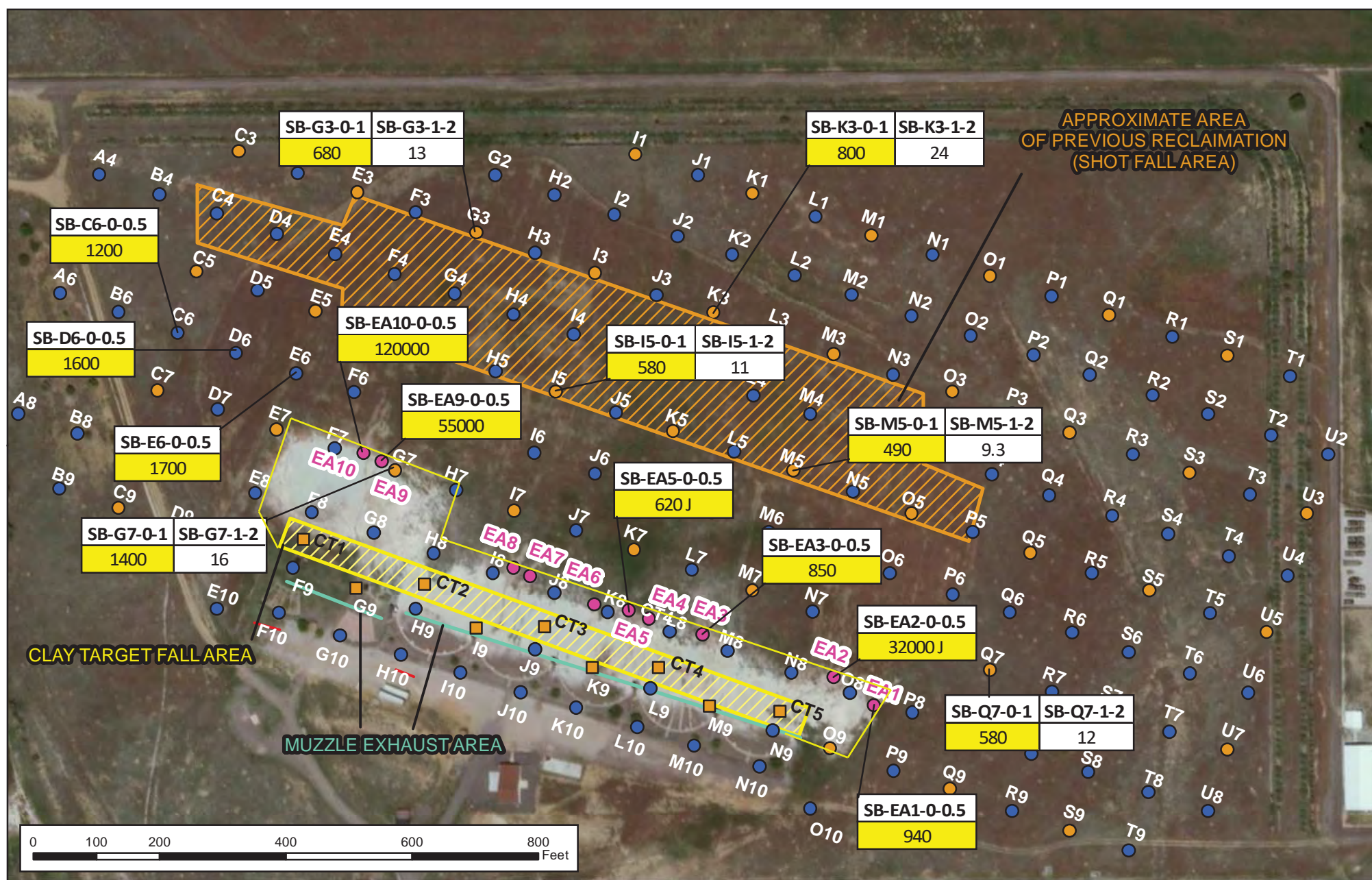


Figure 4
Lead Soil Sampling Results - Human Health
 Buckley Air Force Base, Colorado
 Contract No.: W9128F-17-C-0041
 Task Order: W9128F17R0070

Legend

- Erosion Area Sample
- Definitive Soil Sample Nodes - Lead
- Definitive Soil Sample Nodes - Lead & PAHs
- Screening Soil Sample Nodes
- Result Exceeds EPA RSL



Notes:

- Units in mg/kg = milligrams per kilogram
- Only results for detections exceeding the EPA RSL of 400 mg/kg are displayed, except for deeper samples associated with samples that had exceedances.
- Sample depths are in feet bgs and are given in the sample ID (...-0.5 = 0 to 0.5 feet)
- EPA RSL = Environmental Protection Agency Regional Screening Levels for residential soil
- J - Result is considered to be estimated at the value reported

