

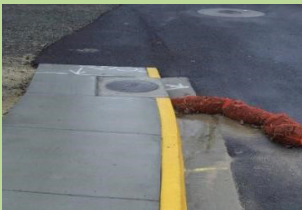
Keep Our Base & Stormwater Clean

Do your part in keeping our base clean from construction runoff.

WHAT TO DO



Do use erosion and sediment control measures to keep sediment on site.



Do protect storm drains and drainage ditches with erosion & sediment control measure (such as rock sock).



Do prevent erosion by stabilizing disturbed steep slopes within construction areas.



Do construct entrances with track-out controls to minimize off-site sediment tracking.

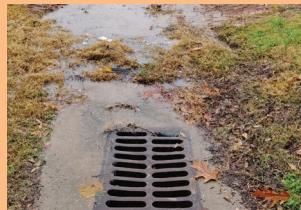


Do restore ground cover as quickly as possible after construction to avoid erosion of disturbed areas.

WHAT NOT TO DO



Do not allow sediment to accumulate past the effective operating condition of erosion & sediment control measures.



Do not leave storm drains and drainage ditches unprotected from construction stormwater pollution.



Do not drive in and out of muddy sites without track-out controls.



Do not track mud and sediment onto the roads at site entrances and exits.



Do not leave sites unstabilized for more than 14 days post construction.

Questions? Contact 460 CES/CEIE @ 720-847-6308