

Figure 11
PAH Soil Sampling Results - Ecological
 Buckley Air Force Base, Colorado
 Contract No.: W9128F-17-C-0041
 Task Order: W9128F17R0070

- Legend**
- Erosion Area Sample Points
 - Definitive Soil Sample Nodes - Lead
 - Definitive Soil Sample Nodes - Lead & PAHs
 - Screening Soil Sample Nodes
 - 5000** Result Exceeds EPA Eco-SSL



- Notes:**
- Units in $\mu\text{g/kg}$ = micrograms per kilogram
 - Only results for detections exceeding the EPA Eco-SSLs are displayed, except for shallower / deeper samples associated with samples that had exceedances.
 - Sample depths are in feet bgs and are given in the sample ID (...-0-0.5 = 0 to 0.5 feet)
 - PAH Totals are the sum of all high or low weight PAH analytes, not just those that exceeded
 - HMW/LMW = High Molecular Weight / Low Molecular Weight
 - EPA Eco-SSL = EPA Ecological Soil Screening Levels (mammalian)

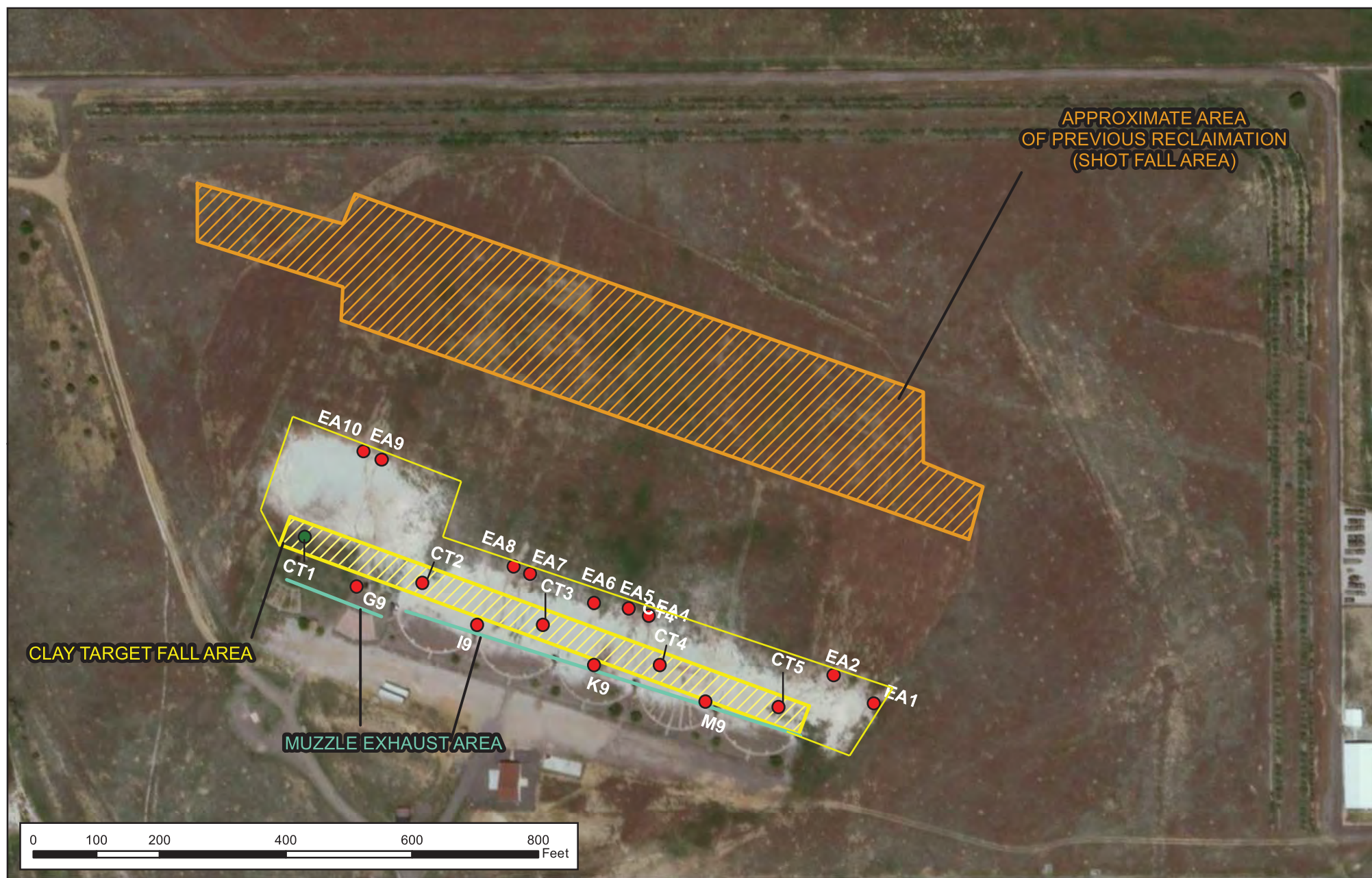


Figure 12
PAH Soil Sampling Results -
0-1 Feet BGS

Buckley Air Force Base, Colorado
 Contract No.: W9128F-17-C-0041
 Task Order: W9128F17R0070

Legend

- Result Does Not Exceed Screening Levels
- Result Exceeds EPA Eco-SSL but Not EPA RSL
- Result Exceeds EPA RSL and EPA Eco-SSL



Notes:

1. EPA RSL = Environmental Protection Agency Regional Screening Level for Residential Soil
2. EPA Eco-SSL = Ecological Soil Screening Level (Mammalian)
3. BGS = below ground surface

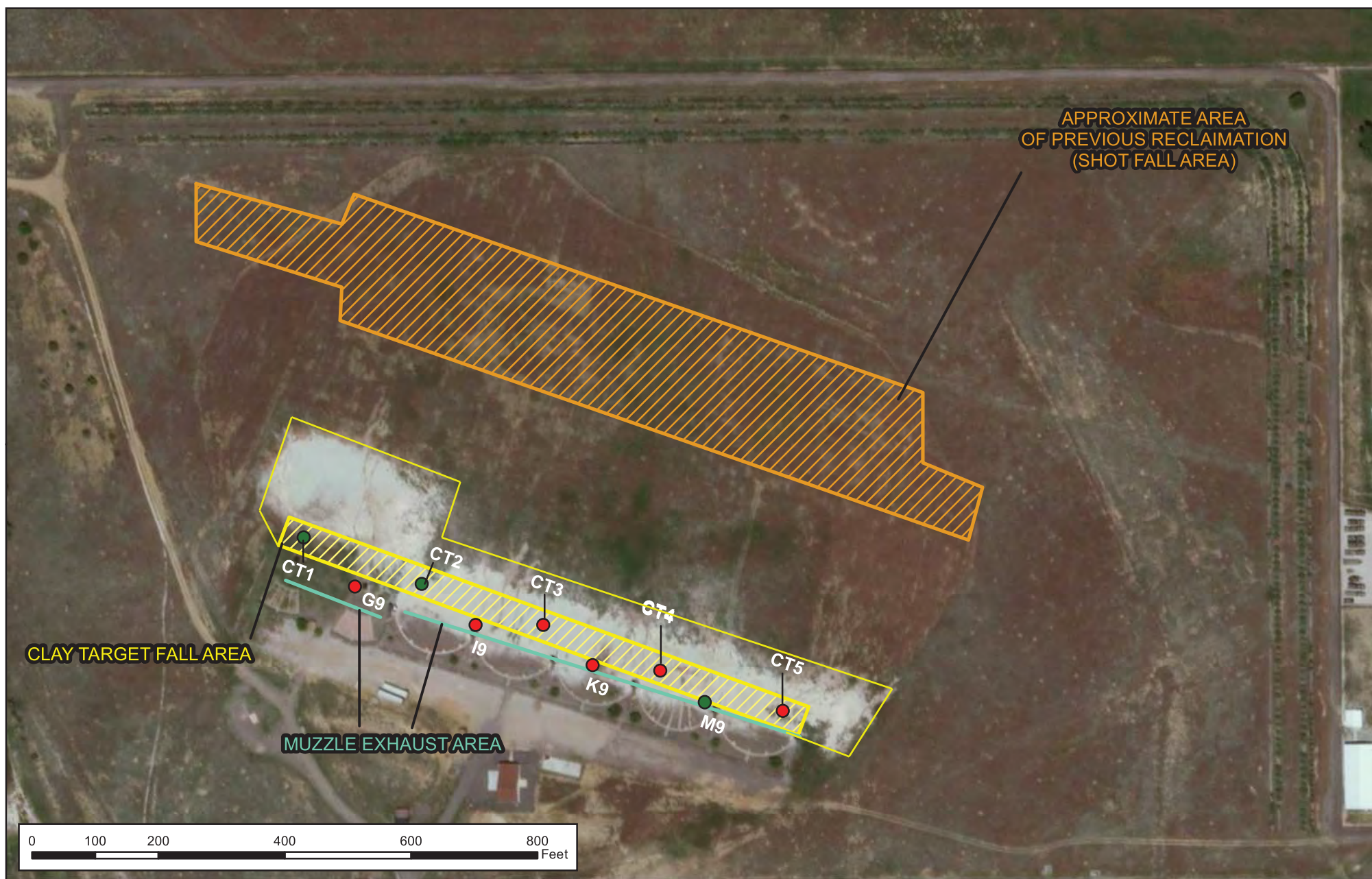


Figure 13
PAH Soil Sampling Results -
1-2 Feet BGS

Buckley Air Force Base, Colorado
 Contract No.: W9128F-17-C-0041
 Task Order: W9128F17R0070

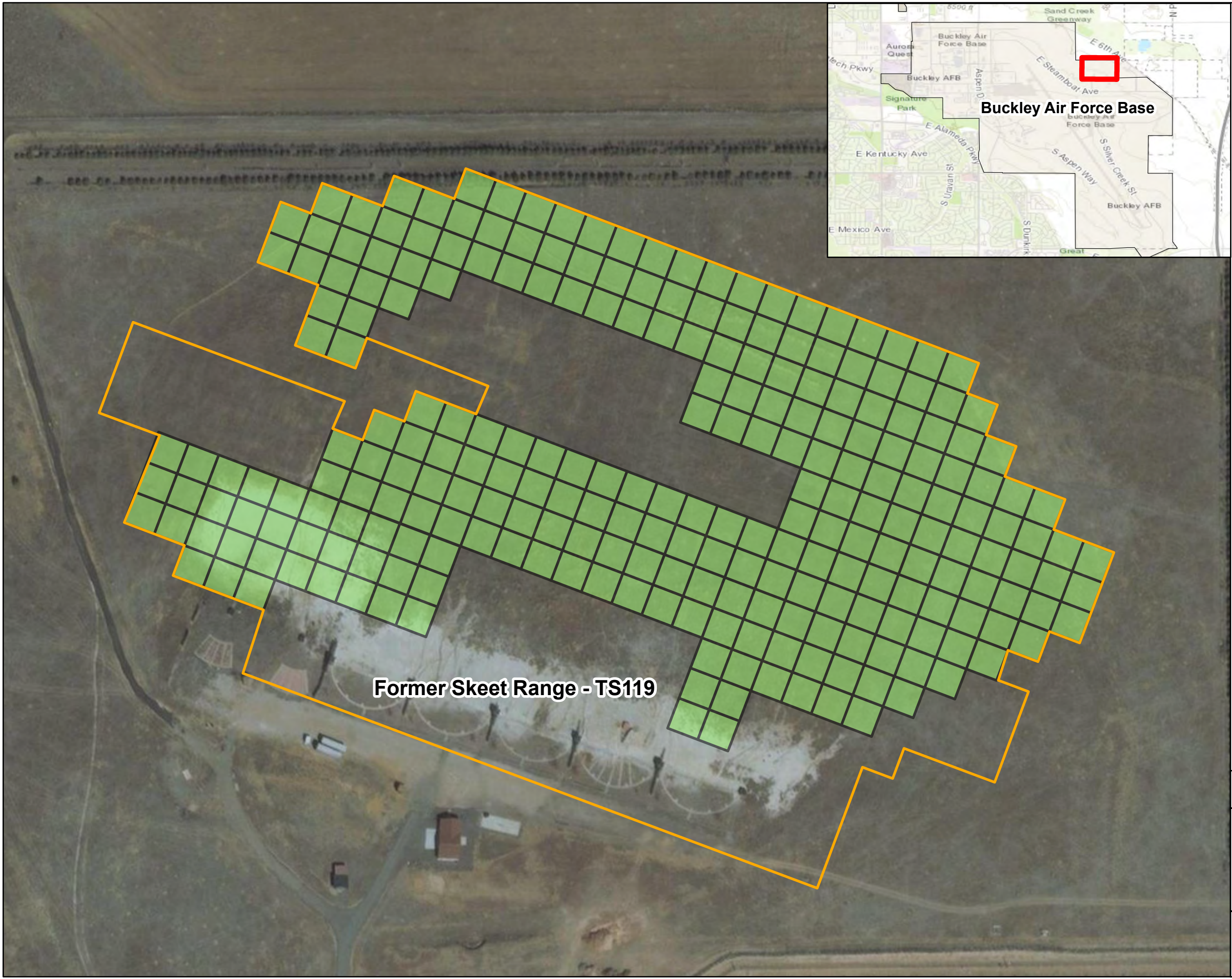
Legend

- Result Does Not Exceed Screening Levels
- Result Exceeds EPA Eco-SSL but Not EPA RSL
- Result Exceeds EPA RSL and EPA Eco-SSL





Notes:

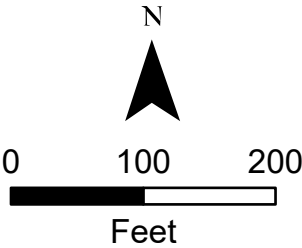
1. EPA RSL = Environmental Protection Agency Regional Screening Level for Residential Soil
2. EPA Eco-SSL = Ecological Soil Screening Level (Mammalian)
3. BGS = below ground surface



Legend

-  Removal Areas 0 - 0.5'
-  Total Removal Area Boundary

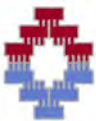
Note: Removal Area Grid Cell = 50' X 50'



Buckley Air Force Base
Aurora, CO

**Alternative 3
0-0.5' Removal and Confirmatory
Sampling Areas**

Non-Time Critical Removal Action
Former Skeet Range MRS TS119



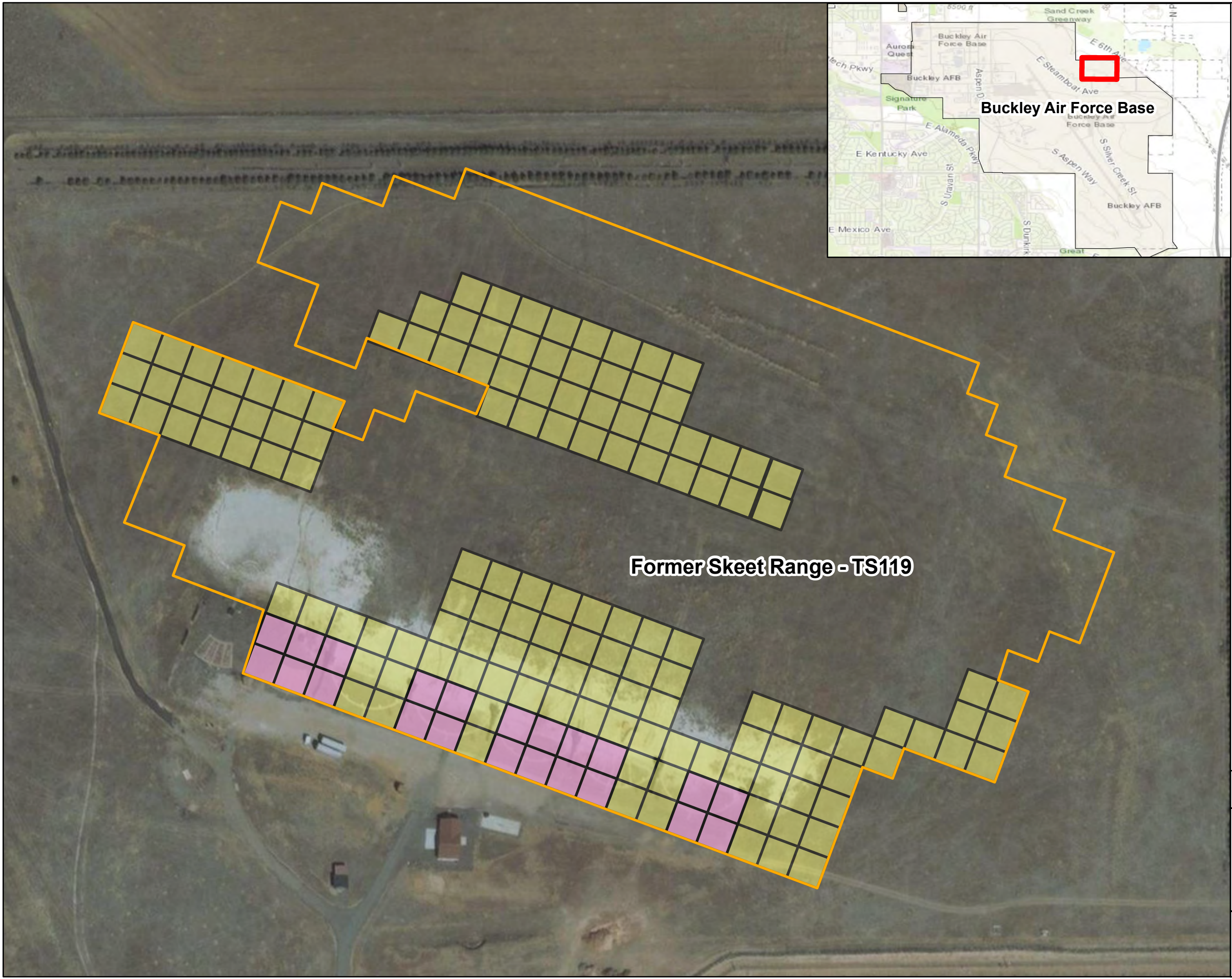
Tehama, LLC

DATE

9/4/2020

FIGURE

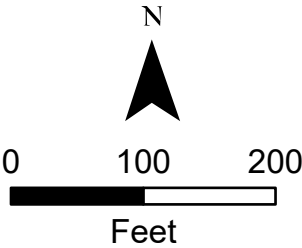
14



Legend

- Removal Areas 0 - 1'
- Removal Areas 1 - 2'
- Total Removal Area Boundary

Note: Removal Area Grid Cell = 50' X 50'



Buckley Air Force Base
Aurora, CO

Alternative 3 0-1' and 0-2' Removal and Confirmatory Sampling Areas

Non-Time Critical Removal Action
Former Skeet Range MRS TS119



Tehama, LLC

DATE

9/4/2020

FIGURE

15