

Figure 6
Lead Soil Sampling Results -
0-1 Feet BGS

Buckley Air Force Base, Colorado
 Contract No.: W9128F-17-C-0041
 Task Order: W9128F17R0070

Legend

- Result Does Not Exceed Screening Levels
- Result Exceeds EPA Eco-SSL but Not EPA RSL
- Result Exceeds EPA RSL



Notes:

1. EPA RSL = Environmental Protection Agency Regional Screening Level for Residential Soil = 400 mg/kg
2. EPA Eco-SSL = Ecological Soil Screening Level (Mammalian) = 56 mg/kg
3. mg/kg = milligrams per kilogram
4. BGS = below ground surface

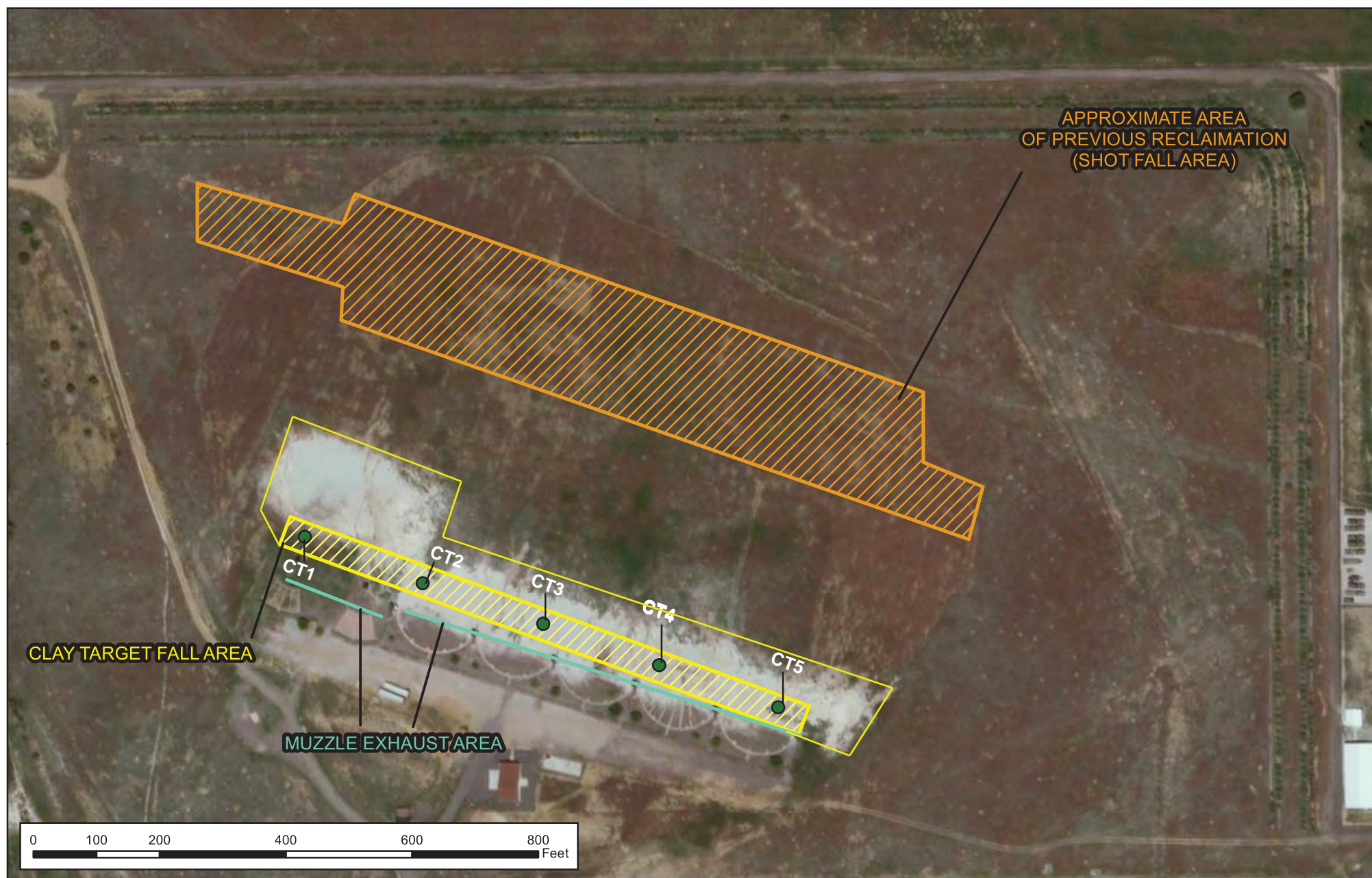


Figure 8
Lead Soil Sampling Results -
2-4 Feet BGS

Buckley Air Force Base, Colorado
 Contract No.: W9128F-17-C-0041
 Task Order: W9128F17R0070

Legend

- Result Does Not Exceed Screening Levels
- Result Exceeds EPA Eco-SSL but Not EPA RSL
- Result Exceeds EPA RSL



Notes:

1. EPA RSL = Environmental Protection Agency Regional Screening Level for Residential Soil = 400 mg/kg
2. EPA Eco-SSL = Ecological Soil Screening Level (Mammalian) = 56 mg/kg
3. mg/kg = milligrams per kilogram
4. BGS = below ground surface

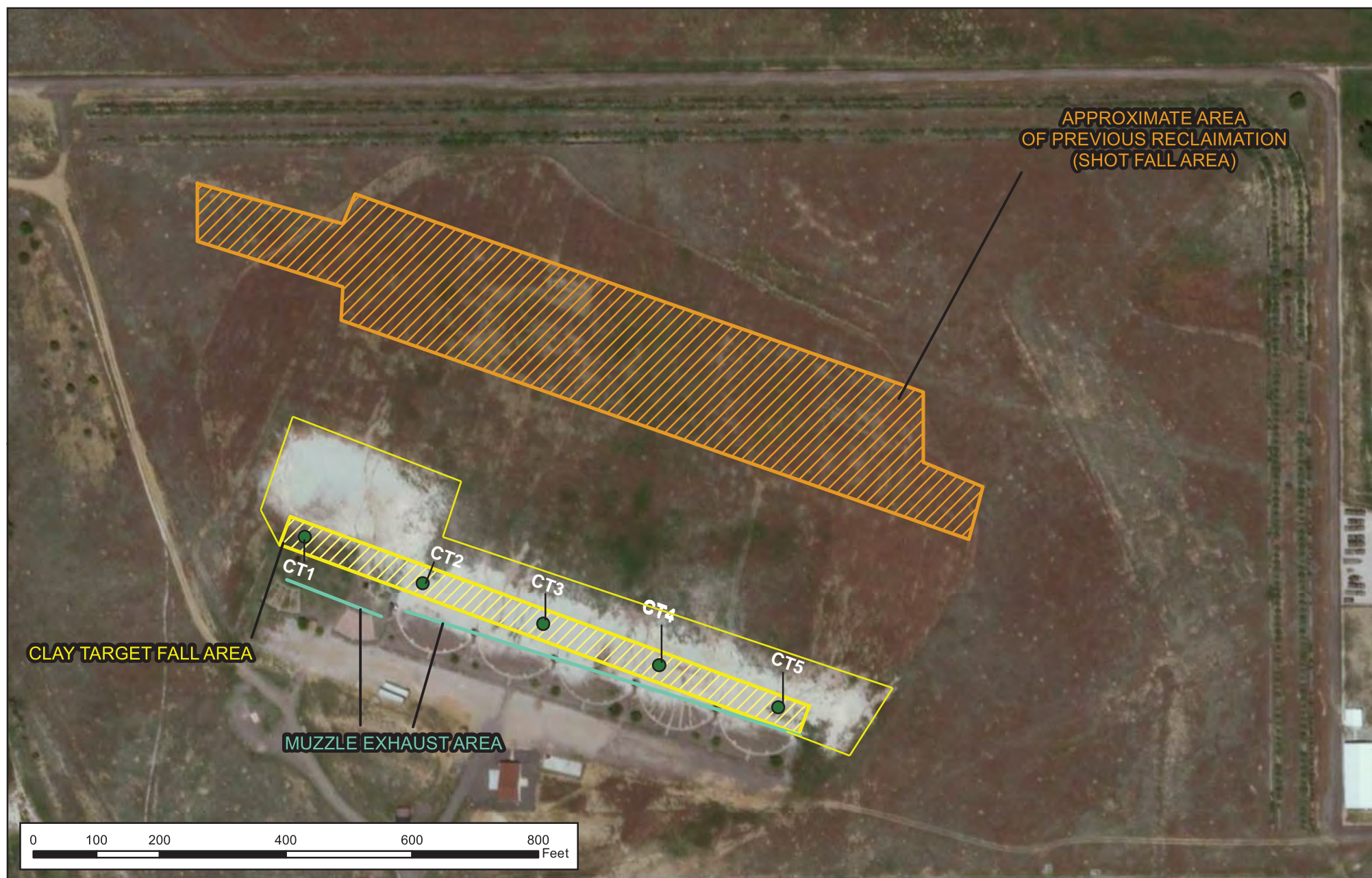


Figure 9
Lead Soil Sampling Results -
4-6 Feet BGS

Buckley Air Force Base, Colorado
 Contract No.: W9128F-17-C-0041
 Task Order: W9128F17R0070

Legend

- Result Does Not Exceed Screening Levels
- Result Exceeds EPA Eco-SSL but Not EPA RSL
- Result Exceeds EPA RSL



Notes:

1. EPA RSL = Environmental Protection Agency Regional Screening Level for Residential Soil = 400 mg/kg
2. EPA Eco-SSL = Ecological Soil Screening Level (Mammalian) = 56 mg/kg
3. mg/kg = milligrams per kilogram
4. BGS = below ground surface

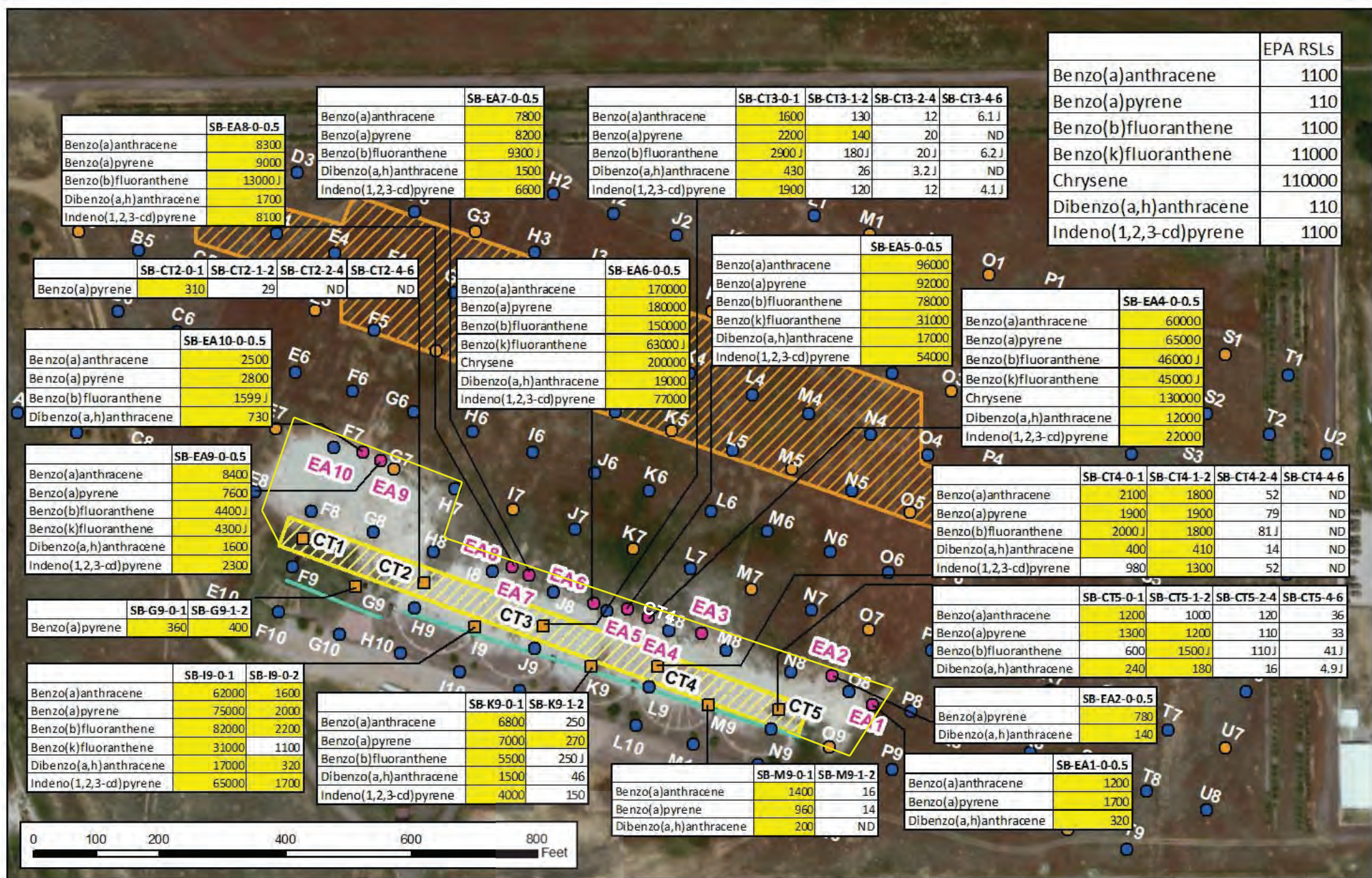


Figure 10

PAH Soil Sampling Results - Human Health

Buckley Air Force Base, Colorado
Contract No.: W9128F-17-C-0041
Task Order: W9128F 17R0070

Legend

- Erosion Area Sample Points
- Definitive Soil Sample Nodes - Lead
- Definitive Soil Sample Nodes - Lead & PAHs
- Screening Soil Sample Nodes
- Result Exceeds EPA RSL



Notes:

1. Units in µg/kg = micrograms per kilogram
2. Only results for detections exceeding the EPA RSLs are displayed, except for shallower / deeper samples associated with samples that had exceedances.
3. Sample depths are in feet bgs and are given in the sample ID (...-0-0.5 = 0 to 0.5 feet)
4. EPA RSL = Environmental Protection Agency Regional Screening Levels for residential soil
5. J - Result is considered to be estimated at the value represented
6. ND - Not detected at the limit of detection